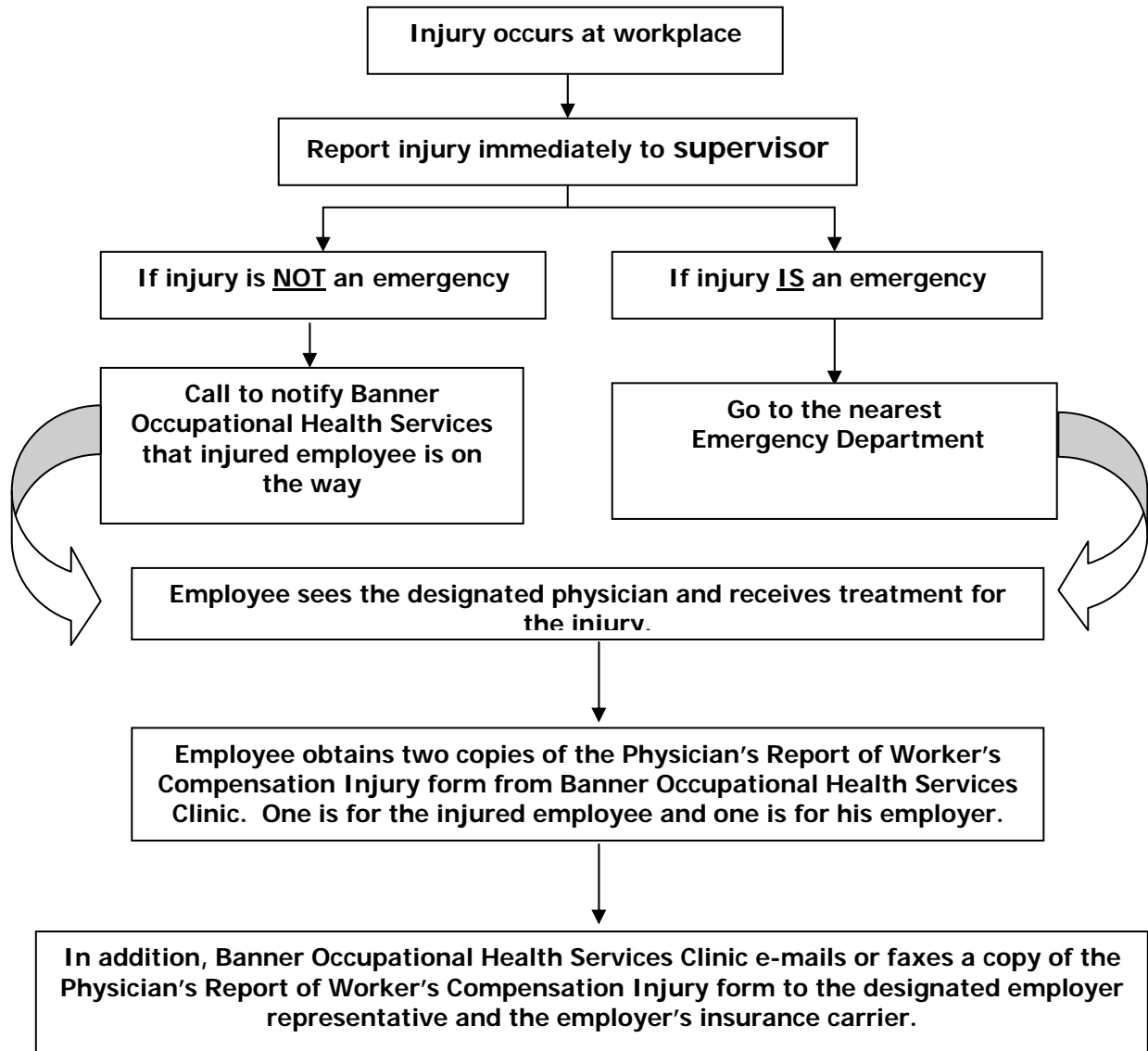


EMPLOYEE GUIDE TO INJURY CARE



**Banner Occupational
Health Services**



North Colorado Medical Center
1800 15th Street, Suite 100B
Greeley, CO 80631
800-992-2011
FULL SERVICE CLINIC

McKee Medical Center
1703 East 18th Street, Suite 4
Loveland, CO 80538
866-887-6096
FULL SERVICE CLINIC