

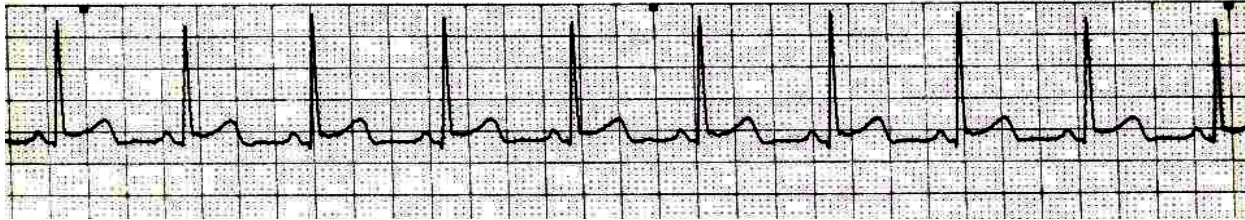


Basic ECG Interpretation Practice Test

DIRECTIONS: The following test consists of 20 questions

- At any time during the test, you can go back to a previous question and edit/change your answer.
- Please answer each question to the best of your ability, using no external references.
- Select your answer by filling in the circle (radial button) above the correct answer in the gray box below each rhythm strip.

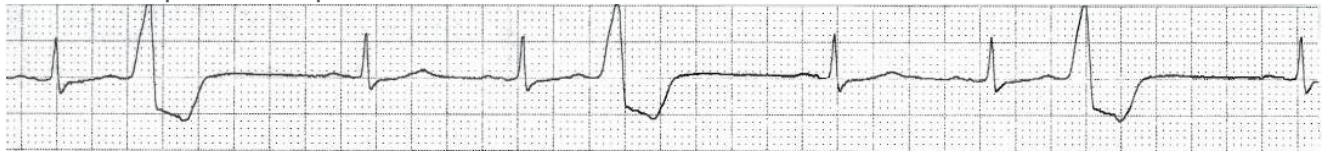
1. Interpret the strip shown below.



- A. Normal Sinus Rhythm
- B. Sinus Tachycardia
- C. NSR with PAC's
- D. NSR with 1st Degree AV Block
- E. NSR with PVC's
- F. Junctional Tachycardia

<input type="radio"/>	<input type="radio"/>	<input type="radio"/>	<input type="radio"/>	<input type="radio"/>	<input type="radio"/>	<input type="radio"/>	<input type="radio"/>	<input type="radio"/>	<input type="radio"/>
A	B	C	D	E	F	G	H	I	J

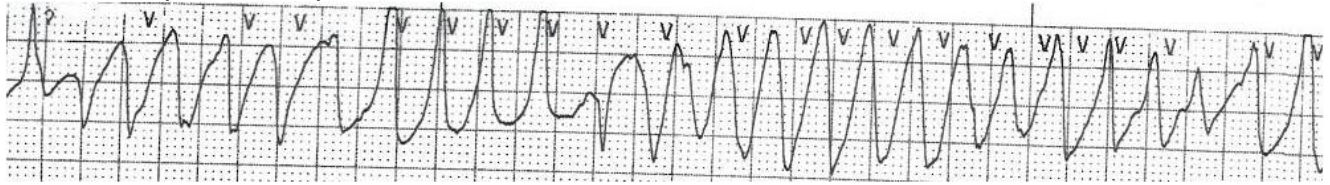
2. Interpret the strip shown below.



- A. Sinus Rhythm with PAC's
- B. Junctional Rhythm
- C. 2nd Degree AV Block, Type I
- D. 3rd Degree AV Block
- E. Normal Sinus Rhythm with PVC's
- F. Idioventricular Rhythm

<input type="radio"/>	<input type="radio"/>	<input type="radio"/>	<input type="radio"/>	<input type="radio"/>	<input type="radio"/>	<input type="radio"/>	<input type="radio"/>	<input type="radio"/>	<input type="radio"/>
A	B	C	D	E	F	G	H	I	J

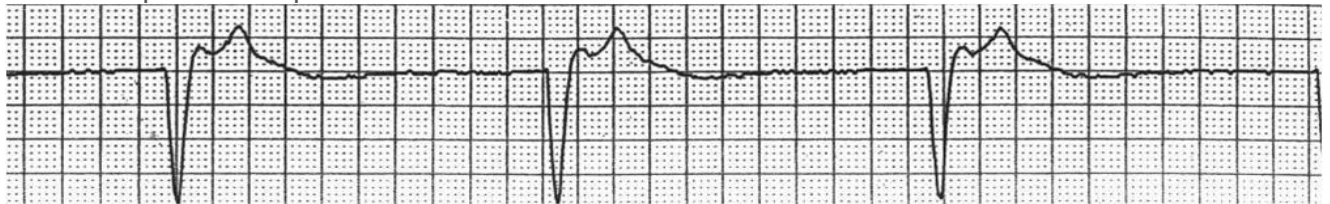
3. Interpret the strip shown below.



- A. Atrial Flutter
- B. Idioventricular Rhythm
- C. Ventricular Tachycardia
- D. Torsades de Pointes
- E. Ventricular Fibrillation
- F. Asystole

<input type="radio"/>	<input type="radio"/>	<input type="radio"/>	<input type="radio"/>	<input type="radio"/>	<input type="radio"/>	<input type="radio"/>	<input type="radio"/>	<input type="radio"/>	<input type="radio"/>
A	B	C	D	E	F	G	H	I	J

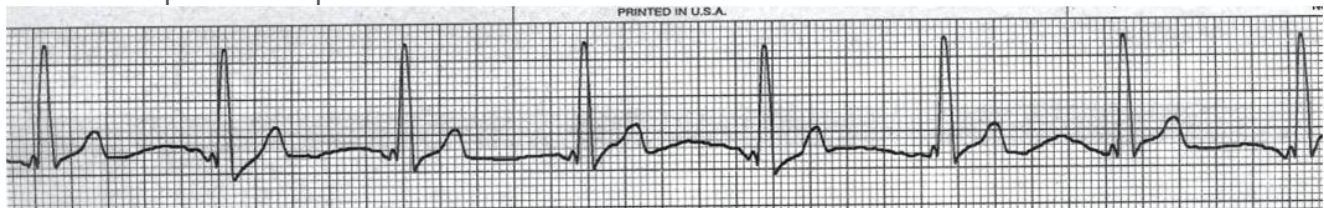
4. Interpret the strip shown below.



- A. Sinus Bradycardia
- B. Atrial Fibrillation with Controlled Rate
- C. Junctional Rhythm
- D. 2nd Degree AV Block, Type 2
- E. 3rd Degree AV Block
- F. Idioventricular Rhythm

<input type="radio"/>	<input type="radio"/>	<input type="radio"/>	<input type="radio"/>	<input type="radio"/>	<input type="radio"/>	<input type="radio"/>	<input type="radio"/>	<input type="radio"/>	<input type="radio"/>
A	B	C	D	E	F	G	H	I	J

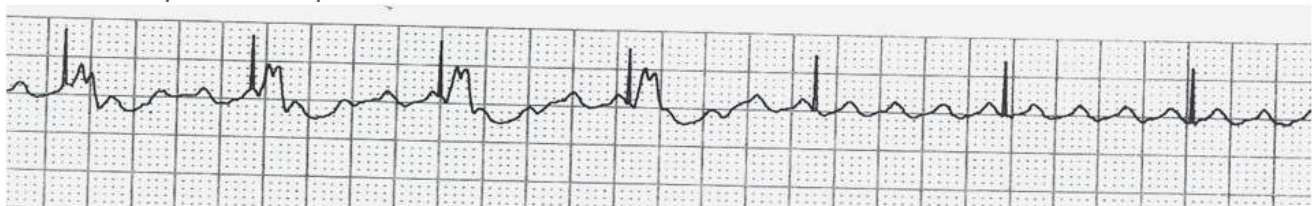
5. Interpret the strip shown below.



- A. Normal Sinus Rhythm
- B. Sinus Bradycardia
- C. Accelerated Junctional Rhythm
- D. NSR with 1st Degree AV Block
- E. Idioventricular Rhythm
- F. V Paced with Failure to Capture

<input type="radio"/>	<input type="radio"/>	<input type="radio"/>	<input type="radio"/>	<input type="radio"/>	<input type="radio"/>	<input type="radio"/>	<input type="radio"/>	<input type="radio"/>	<input type="radio"/>
A	B	C	D	E	F	G	H	I	J

6. Interpret the strip shown below.



- A. Junctional Rhythm
- B. 3rd Degree AV Block
- C. Idioventricular Rhythm
- D. V-Paced with Non-sensing
- E. V Paced with 100% Capture
- F. V Paced with Failure to Capture

<input type="radio"/>	<input type="radio"/>	<input type="radio"/>	<input type="radio"/>	<input type="radio"/>	<input type="radio"/>	<input type="radio"/>	<input type="radio"/>	<input type="radio"/>	<input type="radio"/>
A	B	C	D	E	F	G	H	I	J

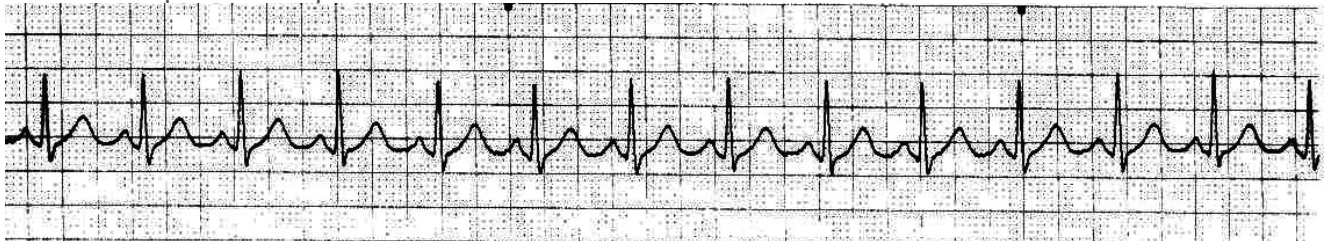
7. Interpret the strip shown below.



- A. Junctional Rhythm with Ventricular Pacing
- B. 3rd Degree AV Block
- C. Ventricular Tachycardia
- D. Sinus Rhythm with Atrial Pacing
- E. Sinus Rhythm with Ventricular Pacing
- F. Sinus Rhythm with Failure to Capture

<input type="radio"/>	<input type="radio"/>	<input type="radio"/>	<input type="radio"/>	<input type="radio"/>	<input type="radio"/>	<input type="radio"/>	<input type="radio"/>	<input type="radio"/>	<input type="radio"/>
A	B	C	D	E	F	G	H	I	J

8. Interpret the strip shown below.



- A. NSR
- B. Sinus Tachycardia
- C. Supraventricular Tachycardia (SVT)
- D. Atrial Fibrillation with Rapid Ventricular Response
- E. Atrial Flutter
- F. Junctional Tachycardia

<input type="radio"/>	<input type="radio"/>	<input type="radio"/>	<input type="radio"/>	<input type="radio"/>	<input type="radio"/>	<input type="radio"/>	<input type="radio"/>	<input type="radio"/>	<input type="radio"/>
A	B	C	D	E	F	G	H	I	J

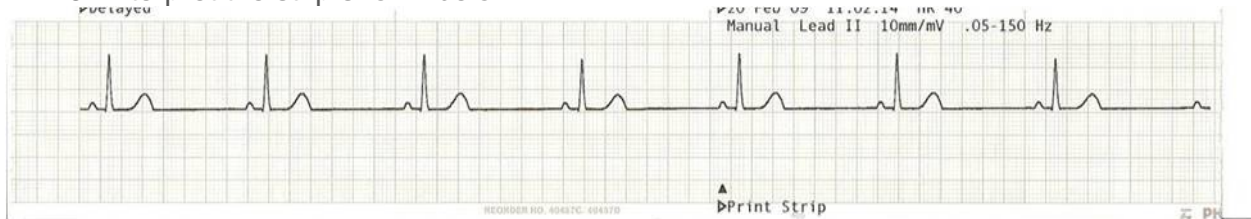
9. Interpret the strip shown below.



- A. Sinus Tachycardia
- B. Atrial Fibrillation
- C. Atrial Flutter
- D. Junctional Rhythm
- E. Ventricular Tachycardia
- F. Ventricular Fibrillation

<input type="radio"/>	<input type="radio"/>	<input type="radio"/>	<input type="radio"/>	<input type="radio"/>	<input type="radio"/>	<input type="radio"/>	<input type="radio"/>	<input type="radio"/>	<input type="radio"/>
A	B	C	D	E	F	G	H	I	J

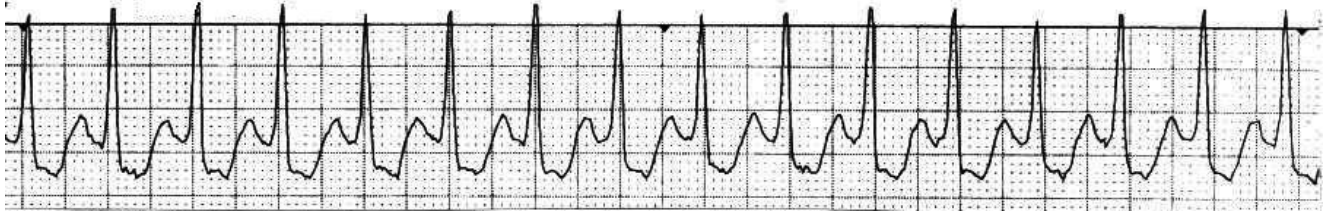
10. Interpret the strip shown below.



- A. Normal Sinus Rhythm
- B. Sinus Bradycardia
- C. Sinus Tachycardia
- D. Junctional Rhythm
- E. NSR with First Degree AV Block
- F. 2nd Degree AV Block, Type I

<input type="radio"/>	<input type="radio"/>	<input type="radio"/>	<input type="radio"/>	<input type="radio"/>	<input type="radio"/>	<input type="radio"/>	<input type="radio"/>	<input type="radio"/>	<input type="radio"/>
A	B	C	D	E	F	G	H	I	J

11. Interpret the strip shown below.



- A. Sinus Tachycardia
- B. Supraventricular Tachycardia (SVT)
- C. Atrial Fibrillation with Rapid Ventricular Response
- D. Idioventricular Rhythm
- E. Ventricular Tachycardia
- F. Asystole

<input type="radio"/>	<input type="radio"/>	<input type="radio"/>	<input type="radio"/>	<input type="radio"/>	<input type="radio"/>	<input type="radio"/>	<input type="radio"/>	<input type="radio"/>	<input type="radio"/>
A	B	C	D	E	F	G	H	I	J

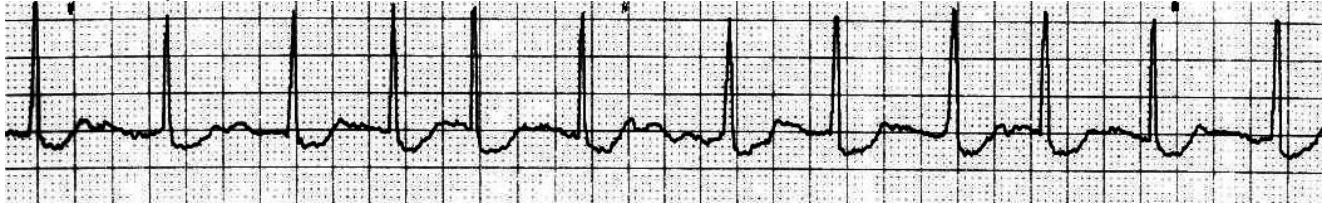
12. Interpret the strip shown below.



- A. Normal Sinus Rhythm
- B. Sinus Rhythm with PAC
- C. Sinus Rhythm with PJC
- D. NSR with First Degree AV Block
- E. 2nd degree AV block type II
- F. Sinus Rhythm with PVC

<input type="radio"/>	<input type="radio"/>	<input type="radio"/>	<input type="radio"/>	<input type="radio"/>	<input type="radio"/>	<input type="radio"/>	<input type="radio"/>	<input type="radio"/>	<input type="radio"/>
A	B	C	D	E	F	G	H	I	J

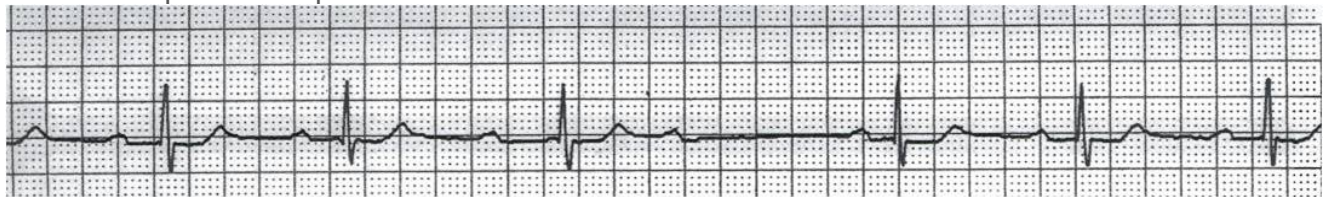
13. Interpret the strip shown below.



- A. Sinus Tachycardia
- B. Sinus Rhythm with PAC's
- C. Supraventricular Tachycardia (SVT)
- D. Atrial Fibrillation
- E. Atrial Flutter
- F. Junctional Rhythm

<input type="radio"/>	<input type="radio"/>	<input type="radio"/>	<input type="radio"/>	<input type="radio"/>	<input type="radio"/>	<input type="radio"/>	<input type="radio"/>	<input type="radio"/>	<input type="radio"/>
A	B	C	D	E	F	G	H	I	J

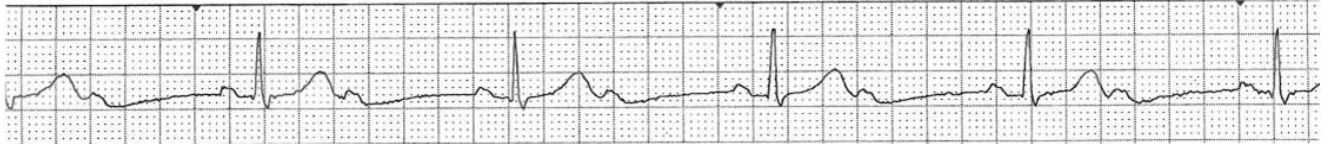
14. Interpret the strip shown below.



- A. Sinus Rhythm with PAC's
- B. Junctional Rhythm
- C. NSR with 1st Degree AV Block
- D. 2nd Degree AV Block, Type I
- E. 2nd Degree AV Block, Type II
- F. 3rd Degree AV Block

<input type="radio"/>	<input type="radio"/>	<input type="radio"/>	<input type="radio"/>	<input type="radio"/>	<input type="radio"/>	<input type="radio"/>	<input type="radio"/>	<input type="radio"/>	<input type="radio"/>
A	B	C	D	E	F	G	H	I	J

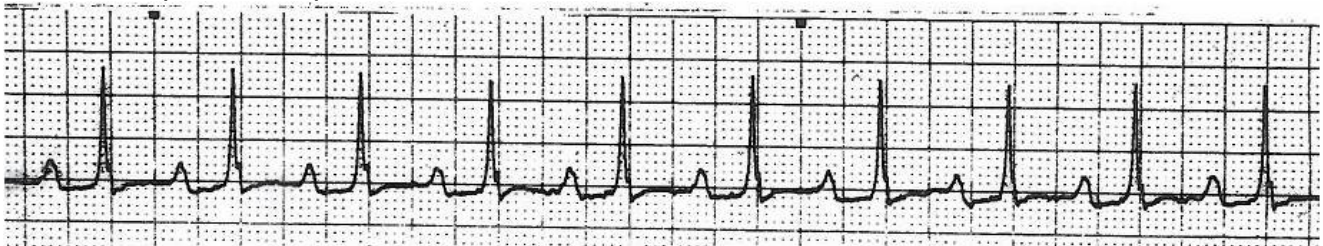
15. Interpret the strip shown below.



- A. Sinus Rhythm with PAC's
- B. Junctional Rhythm
- C. NSR with 1st Degree AVB
- D. 2nd Degree AV Block, Type I
- E. 2nd Degree AV Block, Type II
- F. 3rd Degree AV Block

<input type="radio"/>	<input type="radio"/>	<input type="radio"/>	<input type="radio"/>	<input type="radio"/>	<input type="radio"/>	<input type="radio"/>	<input type="radio"/>	<input type="radio"/>	<input type="radio"/>
A	B	C	D	E	F	G	H	I	J

16. Interpret the strip shown below.



- A. Normal Sinus Rhythm
- B. Junctional Escape Rhythm
- C. NSR with 1st Degree AV Block
- D. 2nd Degree AV Block, Type I
- E. 2nd Degree AV Block, Type II
- F. 3rd Degree AV Block

<input type="radio"/>	<input type="radio"/>	<input type="radio"/>	<input type="radio"/>	<input type="radio"/>	<input type="radio"/>	<input type="radio"/>	<input type="radio"/>	<input type="radio"/>	<input type="radio"/>
A	B	C	D	E	F	G	H	I	J

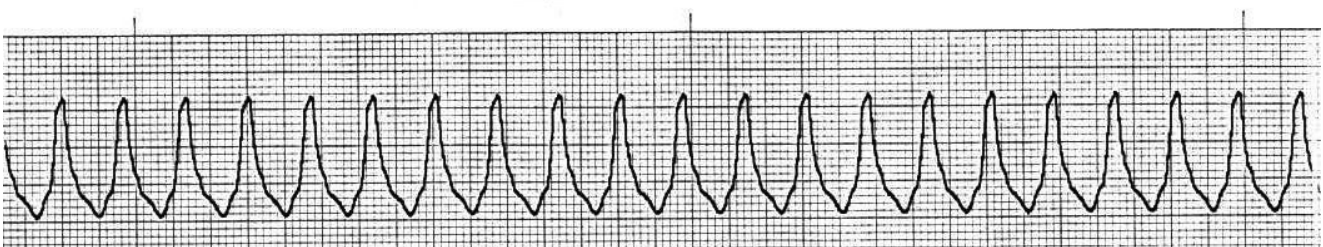
17. Interpret the strip shown below.



- A. Sinus Bradycardia
- B. Junctional Rhythm
- C. NSR with 1st Degree AV Block
- D. 2nd Degree AV Block, Type I
- E. 2nd Degree AV Block, Type II
- F. 3rd Degree AV Block

<input type="radio"/>	<input type="radio"/>	<input type="radio"/>	<input type="radio"/>	<input type="radio"/>	<input type="radio"/>	<input type="radio"/>	<input type="radio"/>	<input type="radio"/>	<input type="radio"/>
A	B	C	D	E	F	G	H	I	J

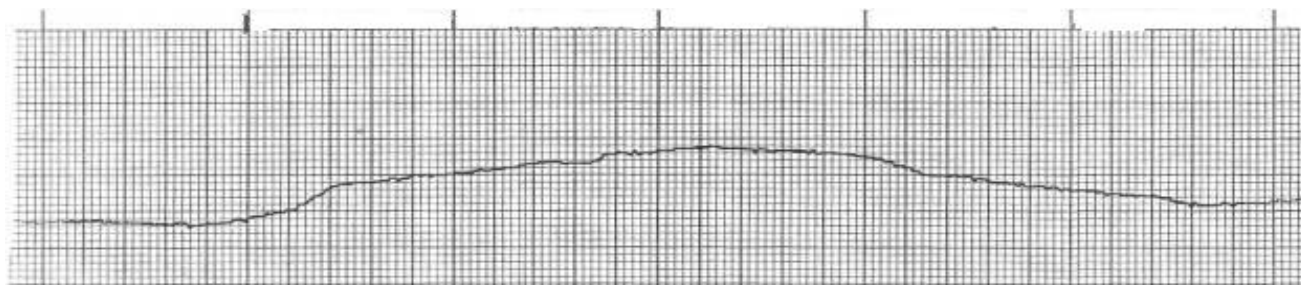
18. Interpret the strip shown below.



- A. Supraventricular Tachycardia (SVT)
- B. Atrial Flutter
- C. Ventricular Tachycardia
- D. Torsades de Pointes
- E. Ventricular Fibrillation
- F. Asystole

<input type="radio"/>	<input type="radio"/>	<input type="radio"/>	<input type="radio"/>	<input type="radio"/>	<input type="radio"/>	<input type="radio"/>	<input type="radio"/>	<input type="radio"/>	<input type="radio"/>
A	B	C	D	E	F	G	H	I	J

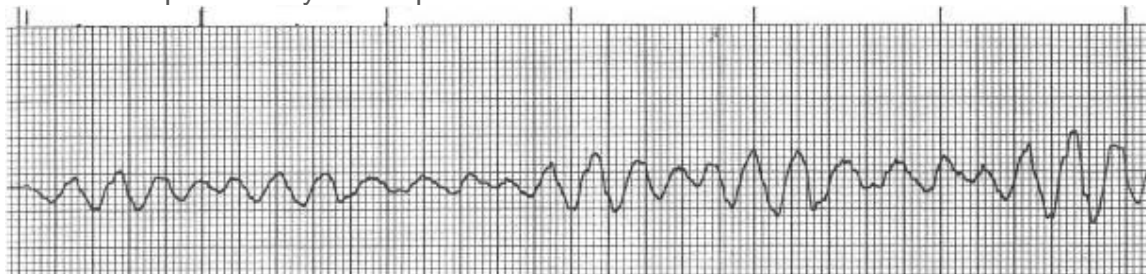
19. Interpret the strip shown below.



- A. Atrial Fibrillation with Controlled Rate
- B. Idioventricular Rhythm
- C. Ventricular Tachycardia
- D. Ventricular Fibrillation
- E. Asystole
- F. V Paced with 100% Capture

<input type="radio"/>	<input type="radio"/>	<input type="radio"/>	<input type="radio"/>	<input type="radio"/>	<input type="radio"/>	<input type="radio"/>	<input type="radio"/>	<input type="radio"/>	<input type="radio"/>
A	B	C	D	E	F	G	H	I	J

20. Interpret the rhythm strip shown below.



- A. Atrial Fibrillation
- B. Idioventricular Rhythm
- C. Ventricular Tachycardia
- D. Atrial Flutter
- E. Ventricular Fibrillation
- F. Asystole

<input type="radio"/>	<input type="radio"/>	<input type="radio"/>	<input type="radio"/>	<input type="radio"/>	<input type="radio"/>	<input type="radio"/>	<input type="radio"/>	<input type="radio"/>	<input type="radio"/>
A	B	C	D	E	F	G	H	I	J